

FACILITY TECHNICAL INFORMATION

(Updated May 2009)

GENERAL INFORMATION:

TELEPHONE NUMBERS

Administrative Offices	772-220-1942
Administrative Offices – FAX	772-287-8693
Box Office	772-286-7827
Box Office – FAX	772-283-2374

FOR SHOW ADVANCE

Bert Zimmerman - Production Advance thalm1020@yahoo.com	772-260-7343
Kia Powers - Hospitality Advance kia@lyrictheatre.com	772-528-4557

EMAIL ADDRESSES

John Loesser – Executive Director loesserj@hotmail.com	772-201-5847
Jo Pace – Assistant to the Executive Director Jopace7@msn.com	772-220-1942 ext.212
Kia Powers - Director of Operations kia@lyrictheatre.com	772-220-1942 ext. 207
Elaine Doran – Director of Educational Programming erldoran@lyrictheatre.com	772-633-0316
Bert Zimmerman – Production & Technical Director thalm1020@yahoo.com	772-260-7343
Marketing marketing@lyrictheatre.com	772-220-1942 ext.212
Polly Delater – Director of Box Office Services boxoffice@lyrictheatre.com	772-220-1942 ext.204

Driving Directions

From 95 going South:

- Take the first Stuart Exit #62 (old number). Make a left turn onto Hwy 714.
- Make a left turn onto Martin Downs Blvd. The turnpike entrance will be on your right.
- Continue on Martin Downs Blvd approx 3 miles. Cross over Palm City Bridge.
- At light turn left onto Kanner Hwy (also called Hwy 76). A Hess Gas Station will be on your right.
- Continue on Kanner which turns into Colorado when you cross. U.S. Hwy 1.
- After crossing US 1, continue straight, move into the left lane when possible.
- Approx 1 mile you'll come to **Confusion Corner**. *You'll know that you are there because you'll be confused!* This is a traffic circle. Drive counterclockwise and turn right onto Flagler Ave. before you cross over the tracks again.
- Keeping the tracks on your left, drive north on Flagler.
- The Lyric Theatre is near the end of the block on your right.

There is additional parking across the tracks in the lot by Sailfish circle.

From 95 going North:

- Take the first Stuart Exit #101 (old number 61)
- Turn right onto Hwy 76
- Proceed approx. 7 miles to **Confusion Corner**. *You'll know that you are there because you'll be confused!* This is a traffic circle. Drive counterclockwise and turn right onto Flagler Ave. before you cross over the tracks again.
- Keeping the tracks on your left, drive north on Flagler.
- The Lyric Theatre is near the end of the block on your right.

There is additional parking across the tracks in the lot by Sailfish circle.

From the Florida Turnpike:

- Exit at #133 and drive straight onto Martin Downs Blvd.
- Continue on Martin Downs Blvd approx 3 miles. Cross over Palm City Bridge.
- At light turn left onto Kanner Hwy (also called Hwy 76). A Hess Gas Station will be on your right.
- Continue on Kanner which turns into Colorado when you cross. U.S. Hwy 1.
- After crossing US 1, continue straight.
- Approx 1 mile you'll come to **Confusion Corner**. This is a traffic circle. Drive counterclockwise and turn right onto Flagler Ave. before you cross over the tracks again.
- Keeping the tracks on your left, drive north on Flagler.
- The Lyric Theatre is near the end of the block on your right.

There is additional parking across the tracks.

Tour Bus Parking is available within walking distance.

DO NOT USE MAPQUEST DIRECTIONS!

Auditorium Seating Capacity:

Upper Balcony	75
Lower Balcony	150
Orchestra	270 (including 8 handicap)
Box	<u>10</u>
Total	500 (seating chart included)

Stage and Delivery Entrance/ Loading:

59 SW Flagler Avenue
Stuart FL, 34994

HOSPITALITY:

Dressing Rooms:

Star Dressing room: SL toilet in room with Shower

Small rooms: 2 in basement, no plumbing

Chorus room: 1 in basement, no plumbing

Flex space backstage w/ Modular panels to create dressing rooms
- (with bathroom facility, no shower)

TECHNICAL INFORMATION:

Staging – Workable stage space – 34'd x 33' w

5- 4'x8' 4 way interlocking platforms

2- 4'x4' 4 way interlocking platforms

Rigging

3 - 35' battens dead hung at 21'6"

3 motorized battens (electrics) 1200lb cap. 1 FOH, 3' from PL, 8' from PL

Load Limit – 1200lbs per batten

Main Drape – Red 24oz Velour - opens from SL (does not guillotine)

Legs / Borders – 6 - 10'x 21'6" legs

2 - 5' x 40' borders

Projection

DVD player at FOH

Video projector from FOH electric position @ 2200 Lumens

Century Projection System

Century Heads

Kelmer Audio

Kelmer Automation

Kelmer Rewind

Kelmer Makeup Table

P&W Transport System

Lighting – (set in rep. config.)

Road Service Power

Panel B – 60 amp single phase used for sound only located SL

Panel LTG – 400 amp 3 phase fused panel, used lighting only

Shore power

60amp single phase circuit

Console – ETC 48/96

AvoLites Pearl 2000

Dimming – 72 dimmers total, (48 ETC Sensor, 36 Leprechaun MX 2400)

Lighting inventory:

2 - Lycian 1206 midgets House follow spots

36 - ParNels

16 - Dortron 26° Leko's

4 - Altman 3 circuit 15 cel cyc strips

2 - 15° Leko's

20 - Source 4 36 degrees

4 - Source 4 26 degrees

2 - Source 4 19 degrees

12 - Coemar "Parlite" LED's

6 - Tracker 575 Moving Head Fixtures

2 - Elation 4 cell Strips (wash)

1 - Chauvet Colowash Batten

Sound – Permanent FOH Mix Position

Consoles:

FOH – Yamaha M7 – Digital 40 Channel

Monitor - A&H 3300 GL series – 40x8x2

FOH System

GL10HPL Compact Line Array Module – Loaded w/ EV Speakers

System Configuration	3-way, tri-amped
LF Subsystem	One 10 in neodymium, vented
LF/MF Subsystem	One 10 in neodymium, vented
HF Subsystem & Loading	Two x1.0 in exit/2.0 in voice coil compression drivers on 100 (h) x 10 (v) HF device
Operating Mode	Tri-amplified
Enclosure Material	9 and 13 ply Baltic birch plywood
Finish	Line-X
Connector	Two Neutrik NL8 Speakon

2 – JBL Side Fill
All Amping is QSC

Monitor Wedges

10 - Acoustic AM 2112
4 – Mackie Monitor 5's

Monitor EQ's

3 – DBX 2231
1 – DBX 1231

Effects

2 - Yamaha SPX 90

Mics & DI's

2 - Shure Beta 87
2 - Shure ULX Wireless Mics
8 - Shure SM 58
6 - Shure SM 57
6 - Audix F10 Drum Mics
2 - Audix F12 Drum Mics
4 - Audix F15
2 – Audix I5
5 – AudioTechnia PZM's
4 – Berringer C1 Condenser mics
6 – Berringer Active Stereo DI's
2 – Berringer Active Mono DI's
1 – Samson Active DI
2 – Rapco Passive DI's

***Any further information on sound or lighting system contact:
Bert Zimmerman at 772- 260-7343***

Miscellaneous Resources:

Hardware Stores

Ace Hardware
975 SW Federal Hwy
Stuart, FL (1 mile)
772-287-3667

Home Depot
3030 SE Federal Hwy
Stuart, FL (3.5 miles)
(772)223-7216

Hotels

Best Western – Downtown - 772-287-6200
1209 S. Federal Hwy
Stuart, FL (1 mile)

Ramada Inn - 772-287-6900
1200 S Federal Hwy
Stuart, FL (1 mile)

Laundry / Dry Cleaning (NO LAUNDRY FACILITIES ON SITE!):

Downtown Cleaners - same day turnaround 9am dropoff 4pm pickup
303 Colorado Ave.
Stuart, FL 34994
772 – 286 – 3418

Downtown Stuart Laundry (Publix plaza) – same day service depending on size of load
Coin Laundromat
736 S Federal Hwy
Stuart, FL 34994
772 – 286 - 1885

Restaurants:

There are roughly a dozen restaurants within walking distance from the theatre, ranging from sushi to sports bars.

Taxi Service

Stuart Taxi Service
772-286-5113

Martin Checker Cab
772-334-1234

Yellow Cab
772-334-1606

Limousine Service

Cobblestone Limousine Service
(Towncar Sedans and Stretches)
772-286-2637

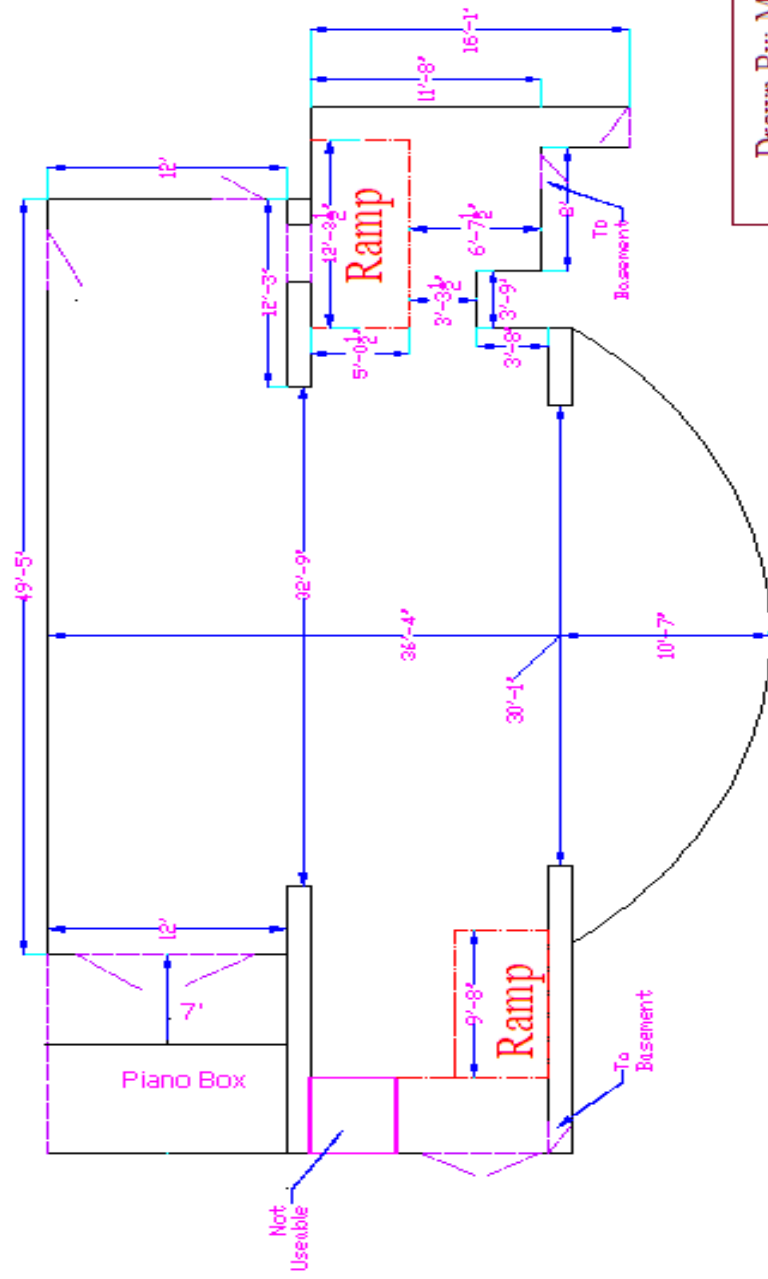
Elegant Limo Service
(15pass. vans, cars, limo)
800-772-8406

Hospital

Martin Memorial Hospital
300 Hospital Ave Stuart (2 miles)
Main Line - 772-287-5200

Music Store

Shumacher Music
888 S Federal Hwy Stuart, Florida 34997
772-286-7474



Drawn By: Maxfield Bishop
 The Lyric Theater
 Scale: 1" = 1'
 Template: 01/01

Note: Only a 32'8" depth is available for use.